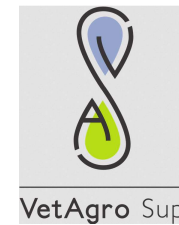


Issues regarding the enforcement of the French food policy in a mountain territory: the case of a territorial food project in Auvergne



MARIE HOUDART

BARITAUX V., CAPITAINE M., CLAIR E., COURNUT E., COURNUT S., LOUDIYI S., POLGE E.,
VERGNAUD D.

Territorial Food Projects: a scientific issue, a tool of the French food policy

Food transition: reconnecting agriculture and food on territories

Lamine et Chiffolleau, 2012 ; Oosterveer et Sonnenfeld, 2012 ; Bricas et al., 2013 ; Rouillé d'Orfeuil, 2018; Morgan, 2014...

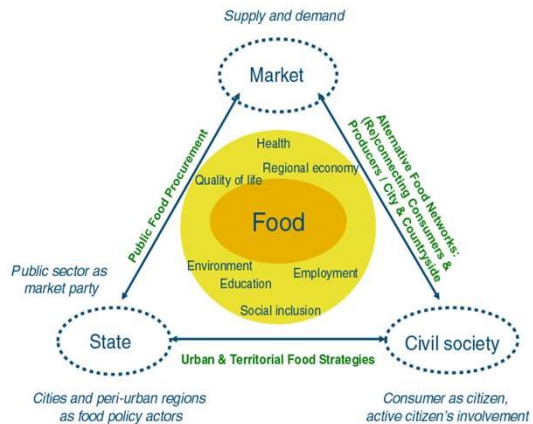
- sustainability issues

Lamine, 2014 ; Morgan, 2015 ; Sage, 2014

- effective solutions for food security

Candel, 2014, Sonnino et al. 2014 ; Sonnino, 2014

A diversity of stakeholders



Wiskerke, 2009

Territorial Food Projects: a scientific issue, a tool of the French food policy

Food transition: reconnecting agriculture and food on territories

Lamine et Chiffolleau, 2012 ; Oosterveer et Sonnenfeld, 2012 ; Bricas et al., 2013 ; Rouillé d'Orfeuil, 2018; Morgan, 2014...

- sustainability issues

Lamine, 2014 ; Morgan, 2015 ; Sage, 2014

- effective solutions for food security

Candel, 2014, Sonnino et al. 2014 ; Sonnino, 2014

A diversity of stakeholders



A french law in 2014

Calls for projects to finance animation



Principle of the winning projects :

- Support sustainable food
- Based on a shared diagnosis of local agricultural production and food needs.



Concretely: a set of local initiatives coordinated in a global and transversal strategy on a territorial scale

Wiskerke, 2009

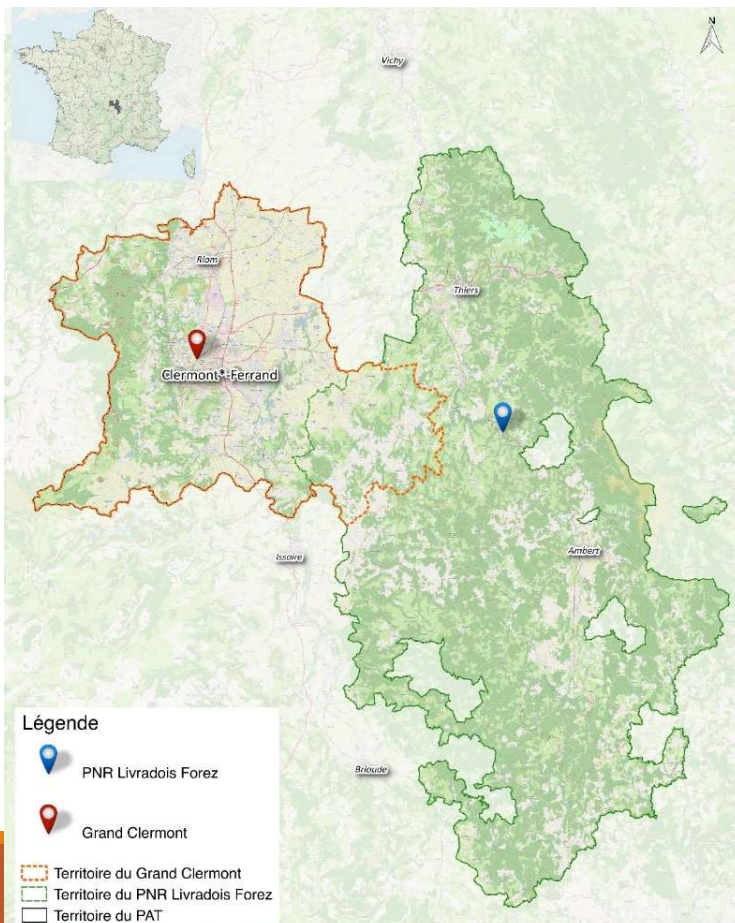
The territorial food project of Grand Clermont and RNP Livradois Forez: a vast and contrasted territory

food issues in a transversal way (social, environmental, economic, health...)

The territorial food project of Grand Clermont and RNP Livradois Forez: a vast and contrasted territory

268 municipalities / 4300km²

Grand Clermont = 106 municipalities / 414,000 inhabitants / strong rural dominance with 64,000 ha of Useful Agricultural Area (UAA) (62% of its territory) / loss of farmland 184 ha/year.



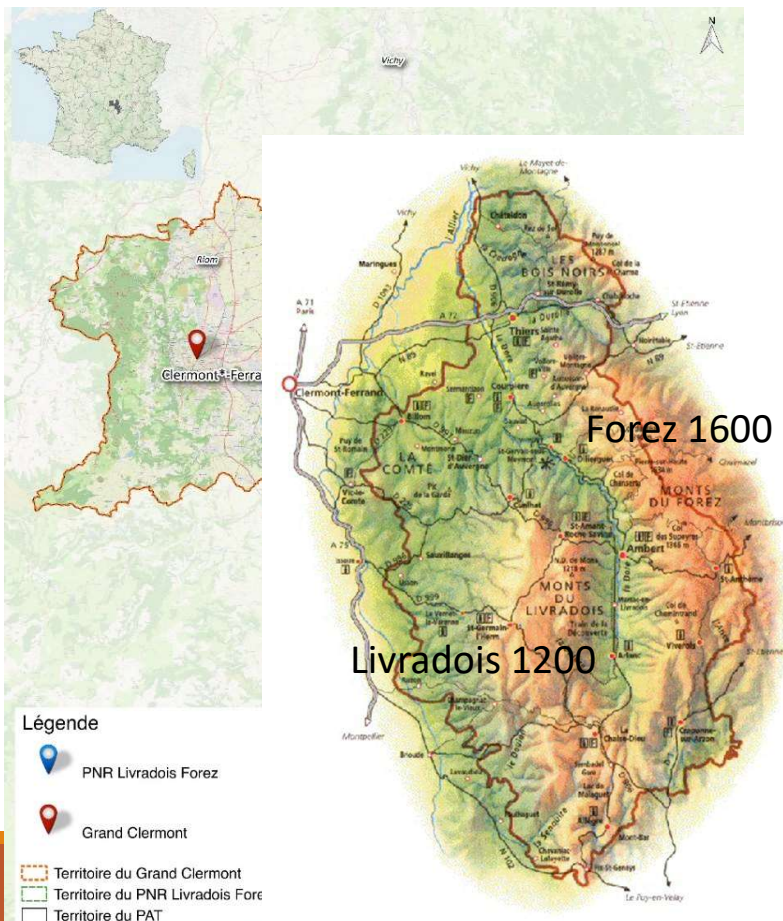
le Grand Clermont
phénomène actif

The territorial food project of Grand Clermont and RNP Livradois Forez: a vast and contrasted territory

268 municipalities / 4300km²

Grand Clermont = 106 municipalities / 414,000 inhabitants / strong rural dominance with 64,000 ha of Useful Agricultural Area (UAA) (62% of its territory) / loss of farmland 184 ha/year.

RNP Livradois-Forez: 158 municipalities / 99,000 inhabitants / UAA of 97,000 ha (34% of the territory) of which 84% is dedicated to livestock / forest 55% of the territory



Mountain area: some specific resources for a territorial food project

- A territory historically linked to dairy farming
2000 farms, 84% of which are cattle and sheep farms
- Extensive polyculture systems, 90% of the land is grassland / 7% of farms AB / breeds and varieties adapted to their territory
- Presence of structuring operators, e.g. dairy (collection and processing) / Quality Products : PDO fourme d'Ambert and Bleu d'Auvergne
- Farms in short food chains: open-air markets, farmers' stores, farm sales, ...
- Support and advisory structures for sustainable agriculture: e.g. the Park



Moutain area: some specific stakes of the territorial food project

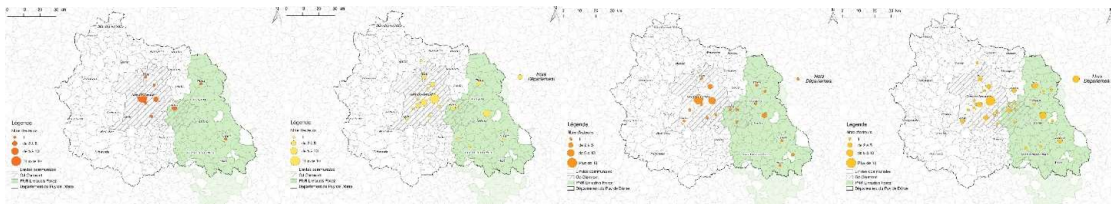
- Agro-pedo-climatic constraints: what is the capacity of this breeding area to meet the 50% food autonomy objective of the Food Project?
- Landlockedness and low density: how to ensure the maintenance of the industrial tools to meet the challenges of structuring the food chain?
 - Studies in progress to maintain a municipal slaughterhouse
- Village desertification: how to maintain the marketing tool to meet the objective of local food?
 - Ongoing actions: a producers' store, networking actions between producers and grocery stores



Moutain area: how to reinforce the participation and inclusion of the stakeholders?



Some specific issues concening the governance of the project: how to ensure/maintain/reinforce the inclusion of mountain stakeholders in the project?

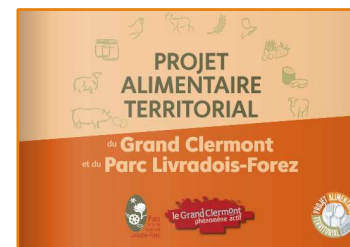


Conclusion

- a very large and complex, transversal project on food issues
- a set of varied scientific questions, involving different disciplines
 - activation of the specific resources of the mountain,
 - resolution of mountain-specific problems (isolation, relief, density)
 - coordination of actors and governance

➡ Issues of the integration of actors, activities and spaces of different territories/areas

Thank you for your
attention



<https://fr.calameo.com/read/0058048431bc37dfc14f8?page=1>

<http://pat-grand-clermont-parc-livradois-forez.fr/>